

Avoiding surface damages avoids corrosion

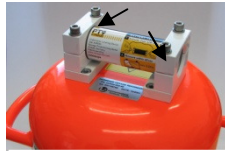


This document has been issued by Novega Produktionssysteme GmbH. Copyright © and all rights concerning this document, reserved. It is not permitted to either publish or reproduce this document in any way. Rev.1.2 of 10-August-2010

ADVICE: FOR MOUNTING OF PT9 C-PROOF DO NOT USE SHARP-EDGED TOOLS OR TOOLS, WHICH APPLY A FORCE ON THE DEVICE! THIS COULD DAMAGE THE SURFACE COATING, AND; CONSEQUENTLY; COULD CAUSE CORROSIONS!

1. Corrosion safety measures when mounting:

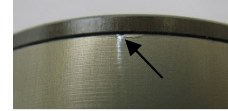
- 1.1 The packaging of PT9 C-PROOF can be opened per turning the box cases counter-clockwise. On no account open the packaging by using a knife or other sharp objects, as the surface coating could become scratched or damaged.
- 1.2. Before you take the PT9 C-PROOF out of the packaging, ensure, that the contact surfaces of the beacon holder (see picture 1.1) are free of impurities and rust. The beacon holder must not any blank or sharp-edged areas, as these could damage the surface coating of the PT9 C-Proof and thus cause corrosion. If applicable, repair the concerned spots by abrasion and varnishing.
- 1.3 Always mind to do the mounting of the device on an adequate and level surface to avoid eventual falling from the work bench. As a result, small pieces of the coating could chip off the edges of the PT9 C-Proof and corrosion could be the consequence.
- 1.4 Pay attention not to cant or deform the PT9 C-Proof while mounting it into the beacon holder.
- 1.5. External damages like scratches or surface damages, caused by transport mistakes or improper handling cause the loss of any guarantee.



Picture 1

2. If the surface coating is scratched or damaged:

If there are visible damages on the surface coating (see picture 2), they must be repaired immediately, because they could cause corrosion at the damaged spot. This could have negative effects on the durability of PT9 C-Proof.



Picture 2

2.1 Repair of small damages:

The PT9 C-PROOF is provided with an extremely resistant surface coating. It is subject to a quality inspection and delivered without damages only. Possible small damages, caused by transport or handling on site, can be corrected by applying a protective paint (see picture 2). For this purpose use the paint as listed in item 2.2. Varnish information. Apply this, after having degreased the surface at and around the damaged area with an adequate detergent (Please see the varnish producer's manual, concerning specified information: e.g. the hardening time).

2.2 Varnish information:

To guarantee a secure closure of the metallic blank, as in dust- and grease-free damaged spots, exclusive paints, controlled by Novega, should be applied. Recommended paints:

-Single-coat lacquer

2.3 Procedure in case of major damages:

In case of doubt, or, if the PT9 C-Proof should show major damages, please contact us (at the address mentioned below).

Novega Produktionssysteme GmbH

Gewerbepark 2
87477 Sulzberg (See)
Germany
Fon: (+49) 8376-92990-0
Fax: (+49) 8376-92990-20

E-Mail: service@novega.de
www.novega-sea.com

Made in Germany